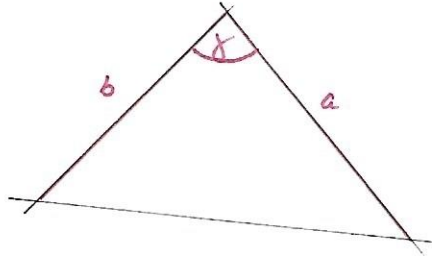


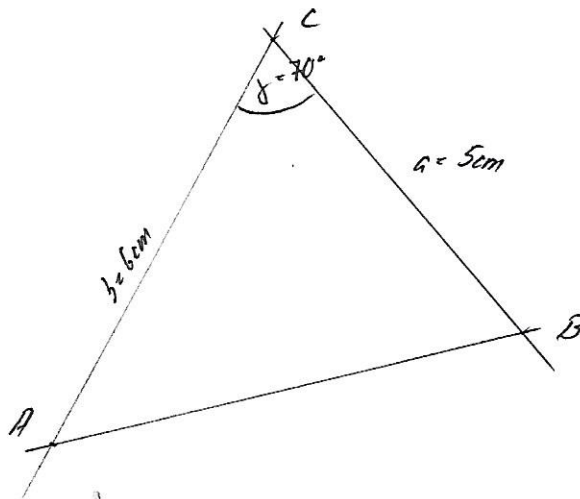
Beispiele zu den Kongruenzsätzen 2-4:

- geg.: $a = 5\text{cm}$, $b = 6\text{cm}$, $\gamma = 70^\circ$
ges.: $\triangle ABC$

Skizze:



Konstruktion:



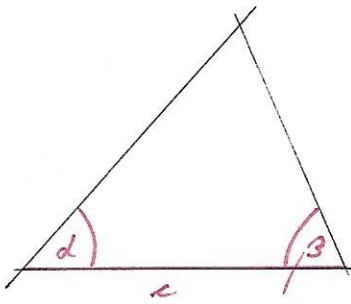
Lösungsweg:

- $a = 5\text{cm} \Rightarrow B, C$
 - $\gamma = 70^\circ$
 - $K(C; b = 6\text{cm}) \Rightarrow A$
- \Rightarrow $\triangle ABC$

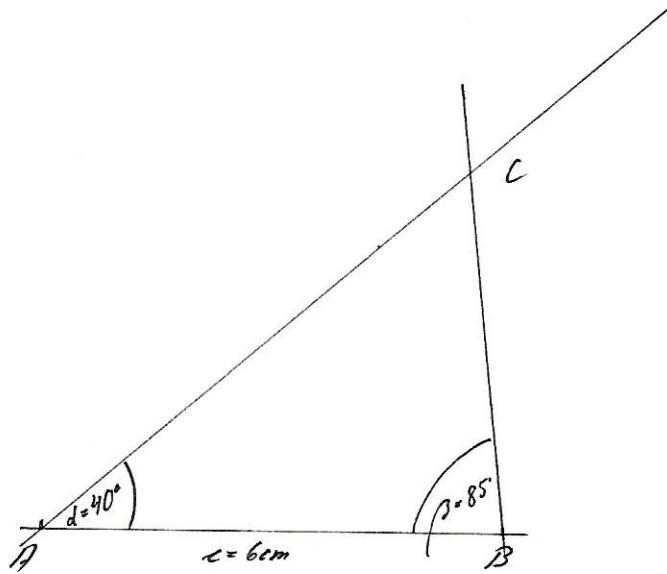
• Ges.: $c = 6\text{cm}$, $\alpha = 40^\circ$, $\beta = 85^\circ$

Ges.: $\triangle ABC$

Skizze:



Konstruktion:



Lösung: i) $c = 6\text{cm} \Rightarrow A, B$

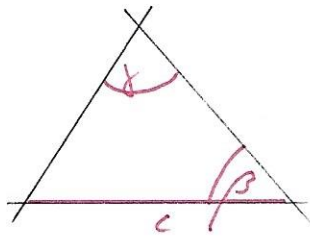
ii) $\alpha = 40^\circ$

iii) $\beta = 85^\circ \Rightarrow C$

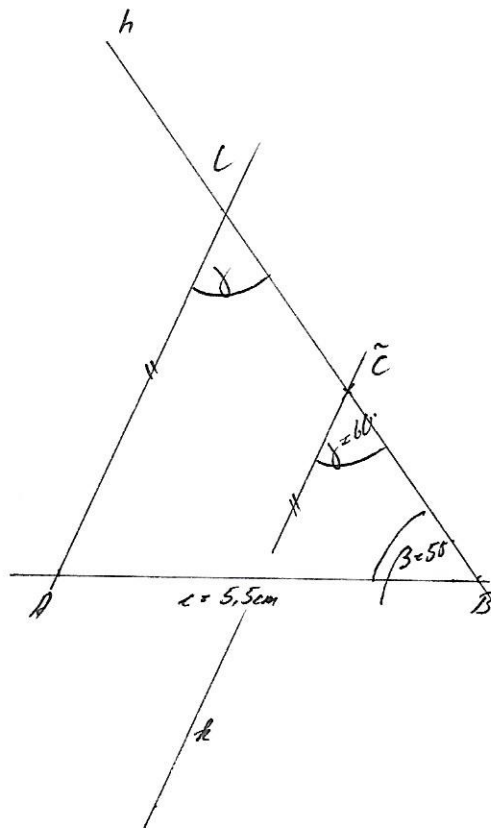
$\Rightarrow \underline{\underline{\triangle ABC}}$

- Geo. 1: $c = 5,5\text{cm}$, $\beta = 55^\circ$, $\gamma = 60^\circ$
- Geo. 2: $\triangle ABC$

Skizze:



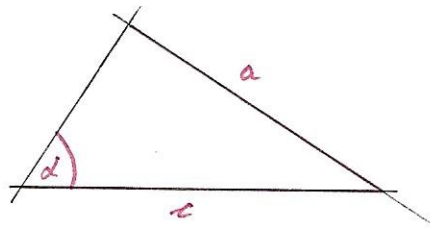
Konstruktion:



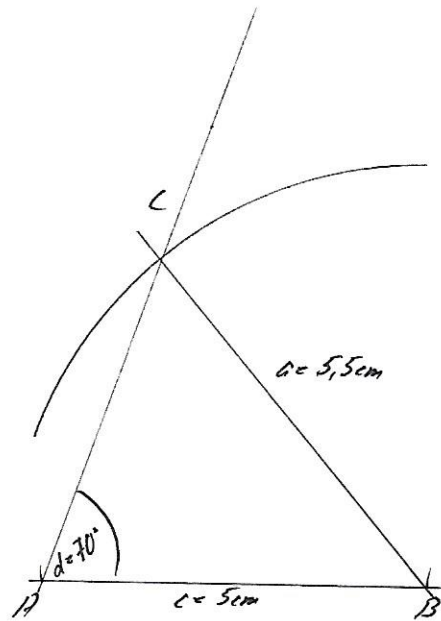
- Lösung:
- $c = 5,5\text{cm} \Rightarrow A, B$
 - $\beta = 55^\circ$
 - Wähle \tilde{C} z.H. auf h
 - $\gamma = 60^\circ$ bei \tilde{C}
 - $k \parallel$ verschieben durch $B \Rightarrow C$
- $\Rightarrow \underline{\underline{\triangle ABC}}$

- geg.: $a = 5,5\text{cm}$, $c = 5\text{cm}$, $\alpha = 70^\circ$
ges.: $\triangle ABC$

Skizze,



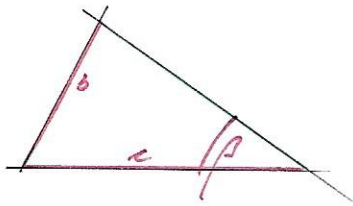
Konstruktion,



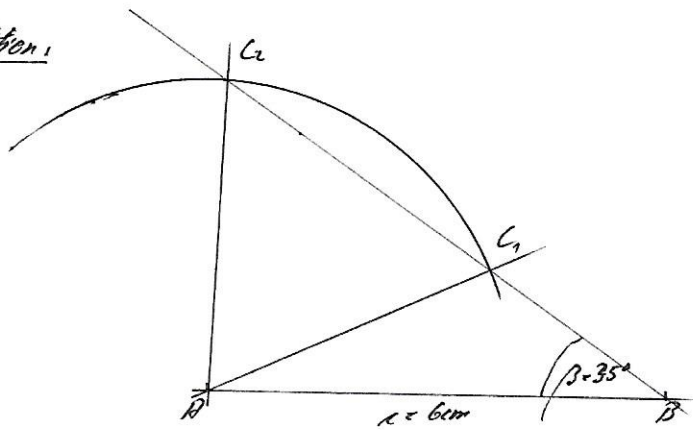
- Lsg.:
- $c = 5\text{cm} \Rightarrow A, B$
 - $\alpha = 70^\circ$
 - $K(B; a = 5,5\text{cm}) \Rightarrow C$
- \Rightarrow $\triangle ABC$

- Geg.: $b = 4\text{cm}$, $c = 6\text{cm}$, $\beta = 35^\circ$
- Ges.: $\triangle ABC$

Skizze:



Konstruktion:



- Lösung:
- $c = 6\text{cm} \Rightarrow A, B$
 - $\beta = 35^\circ$
 - $K(A; b = 4\text{cm}) \Rightarrow C_1, C_2$
- $\Rightarrow \underline{\triangle ABC_1}, \underline{\triangle ABC_2}$